



DATA SHEET FOR FLP SWITCH SOCKET WITH TRANSFORMER

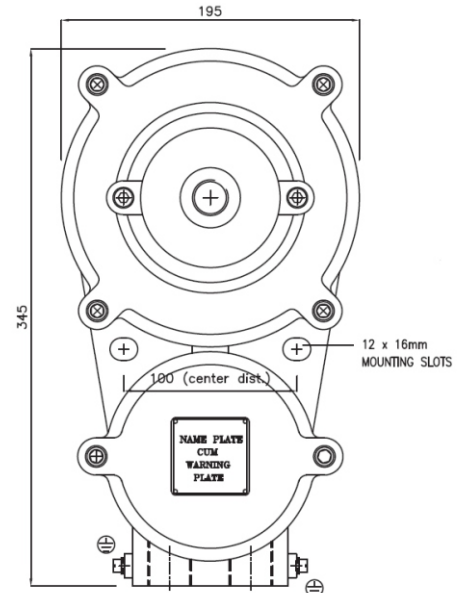
TECHNICAL DATA:

- PRODUCT : SS/2C/2015
- ENCLOSURE : FLAME PROOF (Ex -d), Gas Group IIA , IIB, IIC
As per IS/IEC 60079-1 : 2014
- PROTECTION : WEATHER PROOF IP – 66 AS PER IS/IEC 60529:2001
(Reaffirmed 2014)
- AREA & TEMP. CLASS : Ex db IIC T6 Gb (EX tb / tc IIIC T85 C Db/Dc
(ZONE 1 & 2 & Zone 21 & 22)
- CERTIFICATION : CIMFR, BIS, PESO
- TEMP CLASS : T6
- MATERIAL : DIE CAST ALUMINIUM ALLOY
- FINISH : EPOXY POWDER COATED SHADE AS PER IS : 5
- EARTHING : 1 No INTERNAL & 2 No's EXTERNAL
- HARDWARE : STAINLESS STEEL
- GASKET : 'O' RING ENDLESS GASKET NEOPRENE / SILICON
- NAME PLATE : SS NAME PLATE CUM WARNING PLATE
- ENTRIES : 2 Nos AT BOTTOM AND 1 NO AT PLUG TOP OF
M20 / ½ " NPT / EQUIVALENT/UP TO M25
- SWITCH : UP TO 16AMP DP
- SOCKET : UP TO 16AMP DP
- PLUG TOP : UP TO 16AMP DP (2P + E)
- TRANSFORMER : 100VA 230/24V AC

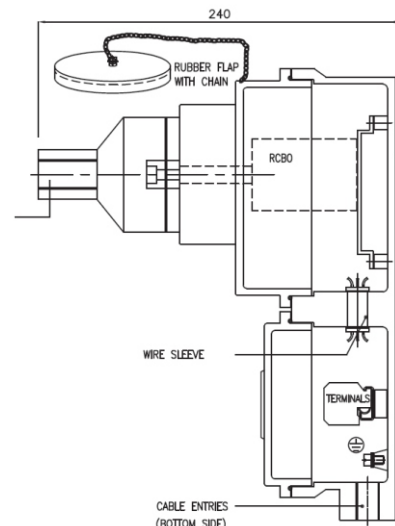


OPTIONS

SR. NO	PARTICULAR	OPTIONS
1.	MATERIAL OF CONSTRUCTION	STAINLESS STEEL
2.	GLAND & PLUG	BRASS / SS / ALUMINIUM
3.	COLOUR SHADE	631, 632, 355, 7031, 7032 etc.
4.	CANOPY	M.S POWDER COATED / FRP /GI



FRONT VIEW



SIDE VIEW

NOTE:- SWITCH SOCKET CAN BE PROVIDED WITH ELCB / RCBO / MCB COMBINATION AS PER CUSTOMER REQUIREMENT